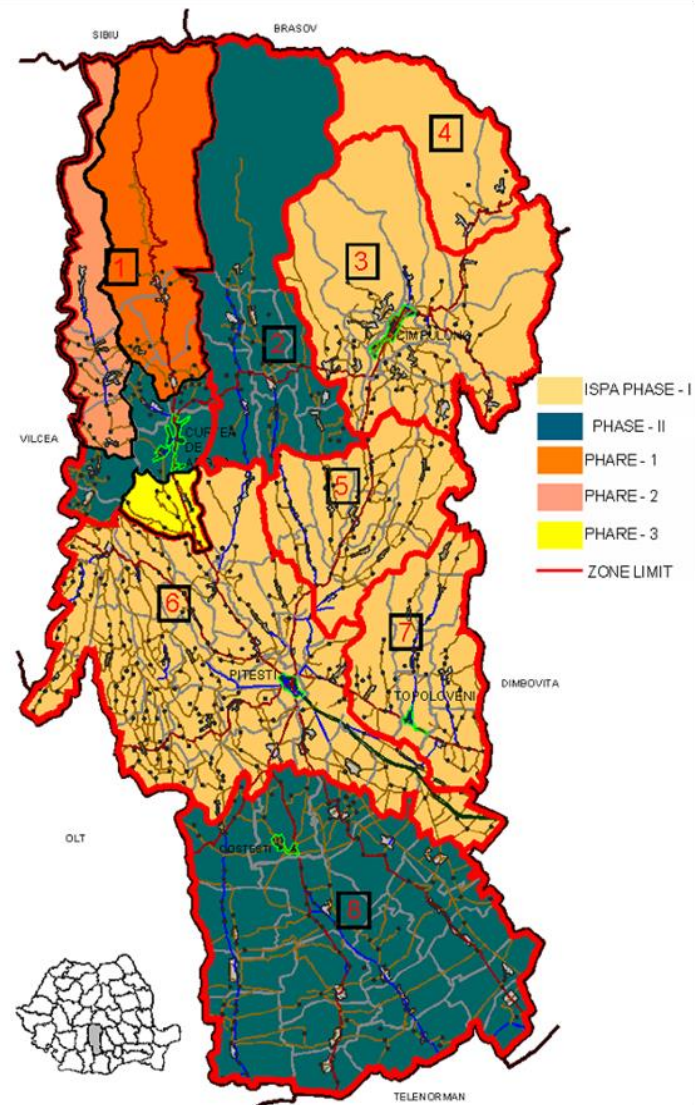


# INTERCOMMUNITY DEVELOPMENT ASSOCIATION SERVSAL ARGES



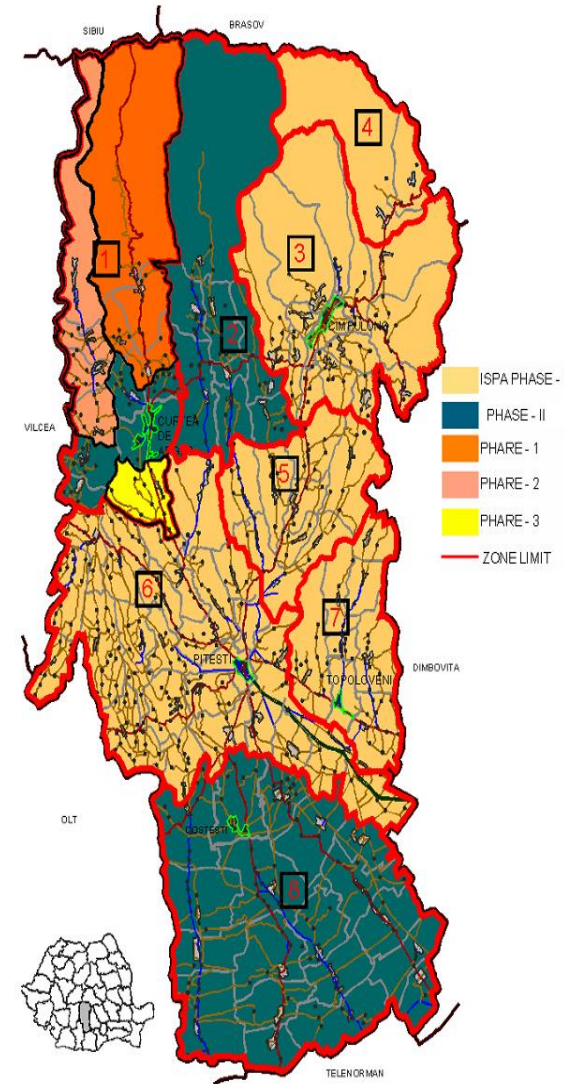
# INTEGRATED WASTE MANAGEMENT IN ARGES COUNTY

- ❖ **Members: 103 administrative units**
- ❖ **Arges County: 600.000 inhabitants**
- ❖ **The project was financed by I.S.P.A. and S.O.P. Environment and implemented in 2 phases:**
  - **Investment phase**
  - **Operational phase**



# Implementation phase

- ❖ Closing 6 waste landfills in urban areas.
- ❖ Remediation of waste landfills in rural areas.
- ❖ 3 transfer stations.
- ❖ 4 composting plants.
- ❖ One regional ecological waste deposit.
- ❖ One sorting station.
- ❖ Machinery, vehicles for waste collecting.
- ❖ Waste containers, waste bins and compost bins.





## The wastelandfill of Albota Before



## The wastelandfill of Albota Now





# Recyclable waste quantities

2013	2014	2015
6.342,86 t	9.976,15 t	14.265,799 t



# Compostable waste

2013	2014	2015
355,37 t	1.052,68 t	1.302,28 t





# Compostable waste



## Individual compost units

61 communities

500 i.c.u.

Made from recycable materials



# General aspects



- ❖ **The percentage of total diversion from deposition in the waste landfill (waste collected) is 23.51 % - 34,200 tons.**
- ❖ **The percentage of recycling / recovery the waste is 15.6 %– 9.920 tons.**
- ❖ **The targets for 2015 - 2018 are 35% for the recyclable waste and 50 % of waste amounts collected.**



# Information campaigns - Public awareness



" Otherwise School Week "



# Partnership with the University of Pitesti

## Environmental engineering faculty

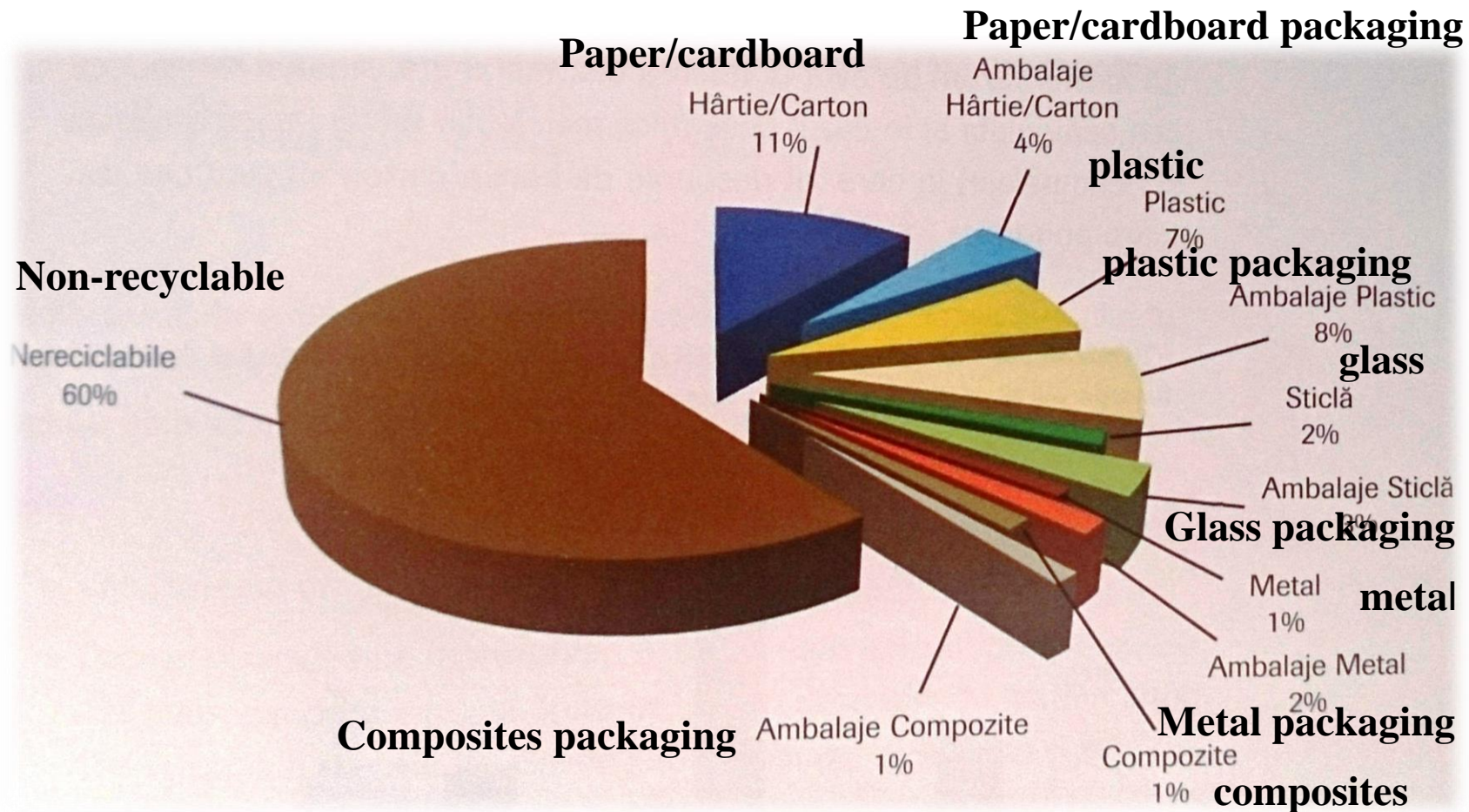


### Waste composition analysis





# Waste composition



❖ The average annual generation index of mixed household waste collection :

urban area: 0.91 kg / pers . / day

rural area: 0.26 kg / pers . / day

❖ The waste analysis shows that the amount of household waste produced per person per day , cca.0,346 kg is recyclable material.

# Information campaigns - Public awareness



**Monitoring picnic areas**





# Reduse. Reuse. Recycle.



**A.D.I. SERVサル ARGES**  
selectam.colectam.reciclam.

**Information  
campaigns in  
traffic.**





# Information campaigns - Public awareness



## “Clean the Arges”

- 9 major rivers.
- 4 cities and 38 communes.
- 262 eco-volunteers from N.G.O.’s.
- 735 volunteers from the communities.
- 750 students.
- Over 7.000 collected bags.
- Over 75 tons of recyclable waste

[www.ecovoluntar.ro](http://www.ecovoluntar.ro)





# Select the waste! Your gesture counts!



**We have equipped over 50 institutions and schools with containers for recyclable waste and we informed a total of 5.000 students.**







# Challenges

- ❖ **Difficult process of selecting waste at the source (eco education).**
- ❖ **The “disappearance” of the waste with market value, vandalizing the waste containers and the waste collection platforms by the non - formal sistem.**
- ❖ **Reduced treatment facilities - (M.B.T.) and production facilities - (R.D.F.).**
- ❖ **The developing of the infrastructure is hampered by the cost affordability of sanitation services.**
- ❖ **Adaptation to the new institutional associative framework legislation.**

**Thank you for your attention!**

**Ing. Traian ACHIM**

**Head of Monitoring Service  
I.D.A. Servsal Arges**

